



Office Condo For Sale

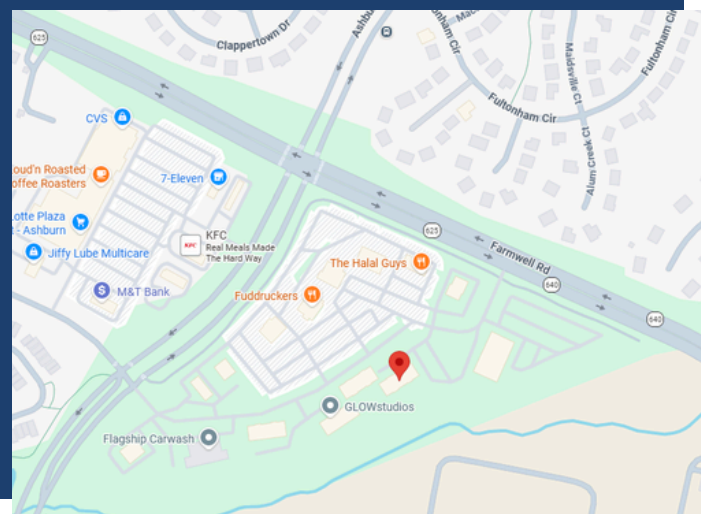
44081 Pipeline Plz,
Ashburn, VA 20147

Suite 210 | 1,124 SF

\$430,000



This first floor condo is centrally located in Ashburn with convenient access to key routes such as Route 7, Loudon County Parkway, and is close to Dulles International Airport. It has a restroom, kitchen, and multiple offices. There are also several walkable amenities, including a coffee shop and restaurants.



Patty I. Brown, CCIM
President / Principal Broker

pibrown@marathonrgi.com

703-402-2433

Licensed in VA | MD | D.C.



Office Condo For Sale

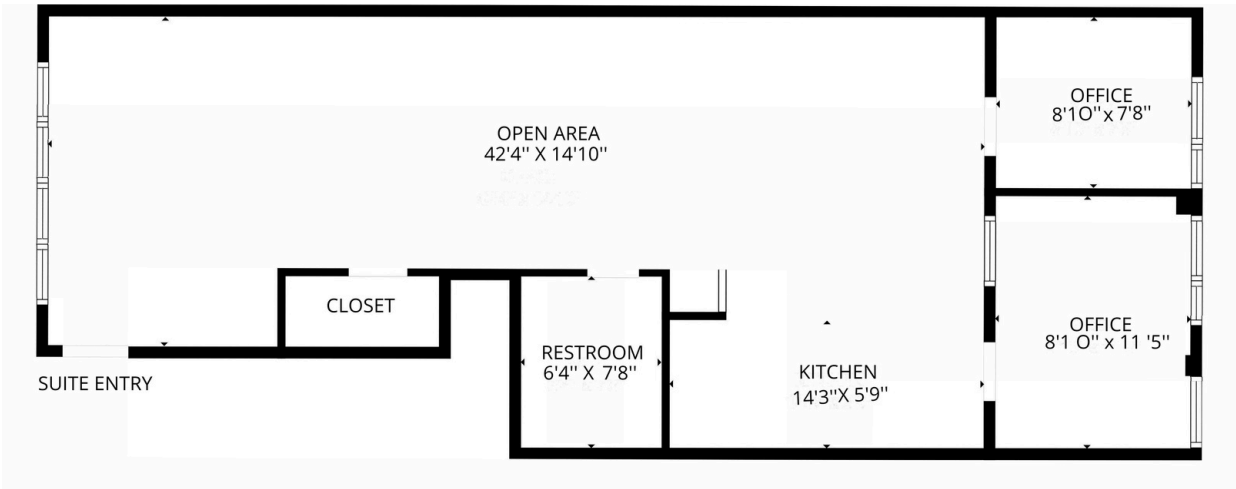
Suite 210 | 1,124 SF

\$430,000



Additional Info

- Class B building
- Easy access to major transportation routes
- Walkable amenities
- Ample parking
- Ashburn Crossroads complex
- Real estate taxes: \$2.18/psf
- Condo dues: 4.02/psf



Patty I. Brown, CCIM
President / Principal Broker

pibrown@marathonrgi.com

703-402-2433

Licensed in VA | MD | D.C.